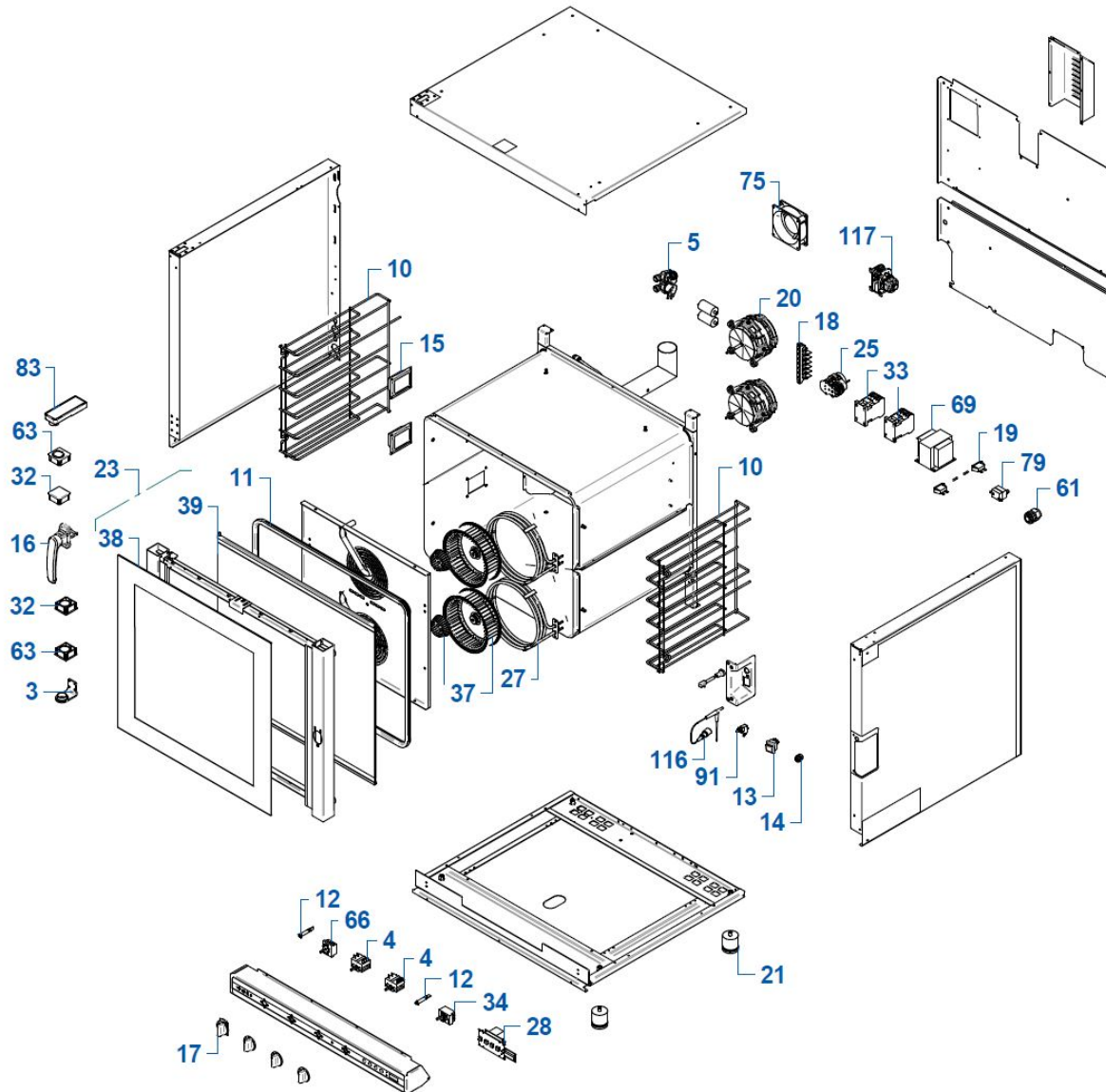


PF7706_PI5

- GALILEI PLUS MECHANICAL COMBI OVEN 6 TRAYS 600X400 -
GN 1/1

(print on 08/04/2022)



N	ITEM	N	ITEM
3	CER30081		
4	COM30006		
5	ELE30005		
10	GRI30213		
10	GRI30214		
11	GUA30015		
12	IND30002		
14	PRE00007		
15	LAM00019		
16	MAG30061		
17	MAN30014		
18	MOR30004		
19	PFU30001		
20	MOT30038		
21	PIE30009		
23	POR00338		
25	PRG30015		
27	RES30008		
28	DPY00001		
32	TAP30032		
33	TEL30014		
34	TER30016		
37	VEN30005		
37	VEN30010		
38	VET00338		
39	VET00322		
61	PPC30001		
63	TAP30030		
66	TER30004		
69	TRM30001		
75	MOT30009		
79	TER30013		
83	CER30032		
83	TAP30031		
91	PUL30006		
116	SON30030		
117	PRG30014		

PF7706_PI5

- GALILEI PLUS MECHANICAL COMBI OVEN 6 TRAYS 600X400 - GN 1/1



N	ITEM	DESCRIPTION (ENG)
3	CER30081	CERNIERA INFERIORE IX PORTA SERIE 79 P11
4	COM30006	COMMUTATORE ROTATIVO 3 POSIZIONI GOTTAK 840314
5	ELE30005	ELECTROVALVE 2 WAYS
10	GRI30213	REGGITEGLIE UNIVERSALE 6T INOX DX NO FERMO DEFLETTORE
10	GRI30214	REGGITEGLIE UNIVERSALE 6T INOX SX NO FERMO DEFLETTORE
11	GUA30015	door gasket low
12	IND30002	ORANGE LIGHT
14	PRE00007	PRESA DIN 7 POLI SONDA MULTIPUNTO 1.6 MT
15	LAM00019	GRUPPO LAMPADA RETTANG. BJB 77.708 25W 230V G9
16	MAG30061	MANIGLIA INOX SATINATO + MECCANISMO 6333-020017 (32.5 mm)
17	MAN30014	KNOB
18	MOR30004	internal terminal 7 poles
19	PFU30001	FUSE HOLDER
20	MOT30038	MOTOR
21	PIE30009	oven's adjustable feet
23	POR00338	ASSIEME PORTA 6T SERIE 77 P10
25	PRG30015	PRG.CAMME 11902F1AGE000.0070 50/60Hz UL REVERSE
27	RES30008	RESISTENZA 3 SPIRE Ø226 5000W 1GIK3EW52 FLANGIA AISI304
28	DPY00001	***MONTAGGIO SCHEDE DISPLAY TEMPERATURA ORIZZONTALE (DPY00001)
32	TAP30032	symmetric plastic cap for door / close hole
33	TEL30014	TELERUTTORE ABB 4P 25A - 1SBL 131201 R8000 (ABB AFC09-40-00-80) (EX. TEL30010)
34	TER30016	THERMOSTAT UL
37	VEN30005	FAN
37	VEN30010	SINGLE FLOW IMPELLER 240-88
38	VET00338	ASSIEME VETRO ESTERNO 6T SERIE 77 P10
39	VET00322	ASSIEME VETRO INTERNO 6T SERIE 77 P10
61	PPC30001	CABLE GLAND M25x1,5 + NUT
63	TAP30030	symmetric plastic cap for door / open hole
66	TER30004	THERMOSTAT ELECT. HUMIDIFIER
69	TRM30001	AUTOTRASFORMATORE 500VA 160/140/100V
75	MOT30009	COOLING FAN MOTOR
79	TER30013	SECURITY THERMOSTAT
83	CER30032	simmetric plastic hinge
83	TAP30031	plastic cap for hinge
91	PUL30006	DOOR MICRO SWITCH
116	SON30030	SONDA CUORE SING.PUNTO CONN. DIN 7P PEEK NERO, SH/2IA8.13TH16NCV-ve C=9CONAMP019
117	PRG30014	cam-programmed chimney motor

PF7706_PI5

- GALILEI PLUS MECHANICAL COMBI OVEN 6 TRAYS 600X400 - GN 1/1



N	KIT	DESCRIPTION (ENG)
3	KCR00081	HINGE KIT CER30081
4	KCM00006	SWITCH KIT COM30006
5	KEE00005	DOUBLE ELECTROVALVE KIT ELE30005
10	KGI00213	LATERAL TRAYS SUPPORT KIT 6T INOX GRI30213 + GRI30214
10	KGI00213	LATERAL TRAYS SUPPORT KIT 6T INOX GRI30213 + GRI30214
11	KGA00015	DOOR GASKET KIT GUA30015 X 5.5 MT
11	KGA10015	DOOR GASKET KIT GUA30015 x 45 MT
12	KID00002	LIGHT PILOT KIT IND30002
14	KPX00007	JACK FOR MULTIPOINT CORE PROBE PRE00007
15	KLM00019	COMPLETE LAMP KIT 2 x LAM00019
15	KLM01019	COMPLETE LAMP KIT 1 x LAM00019
16	KMG00061	COMPLETE HANDLE DOOR KIT MAG30061
17	KMN00014	KNOB KIT 3 X MAN30014
18	KMR00001	TERMINAL BLOCK KIT 7 POLES MOR30004
19	KPU00001	FUSE HOLDER KIT PFU30001
20	KMT00038	MOTOR KIT MOT30038
21	KPE00009	FEET KIT 4 X PIE30009
23	KPR00338	COMPLETE DOOR KIT POR00338
25	KPG00015	REVERSE KIT PRG30015
25	KPG10015	REVERSE KIT 5 X PRG30005
27	KRS00008	HEATING ELEMENT KIT RES30008
28	KIT00077	KIT SPARE PARTS MNT00132
32	KTP00030	HINGE CAPS KIT 2 X TAP30030+ 2 X TAP30032
33	KTL00014	CONTACTORS KIT 2 X TEL30014
34	KTR00016	TEMPERATURE THERMOSTAT KIT TER30016
37	KVN00005	FAN KIT VEN30005
37	KVN00010	FAN KIT VEN30010
38	KVT00338	EXTERNAL GLASS DOOR KIT VET00338
39	KVT00322	INNER GLASS DOOR KIT VET00322
61	KPC00001	GLAND KIT PPC30001
63	KTP00030	HINGE CAPS KIT 2 X TAP30030+ 2 X TAP30032
66	KTR00004	HUMIDIFICATION REGULATOR KIT TER30004
69	KTM00001	AUTOTRANSFORMER KIT TRM30001
75	KMT00009	MOTOR KIT MOT30009
79	KTR00013	SAFETY THERMOSTAT KIT TER30013
83	KCR00032	HINGE KIT CER30032+TAP30031
83	KCR00032	HINGE KIT CER30032+TAP30031
91	KPL00006	SWITCH KIT PUL30006
116	KSN00030	CORE PROBE KIT SON30030
117	KPG00014	CHIMNEY MOTOR KIT PRG30014

N	ITEM	DESCRIPTION (ENG)
---	------	-------------------